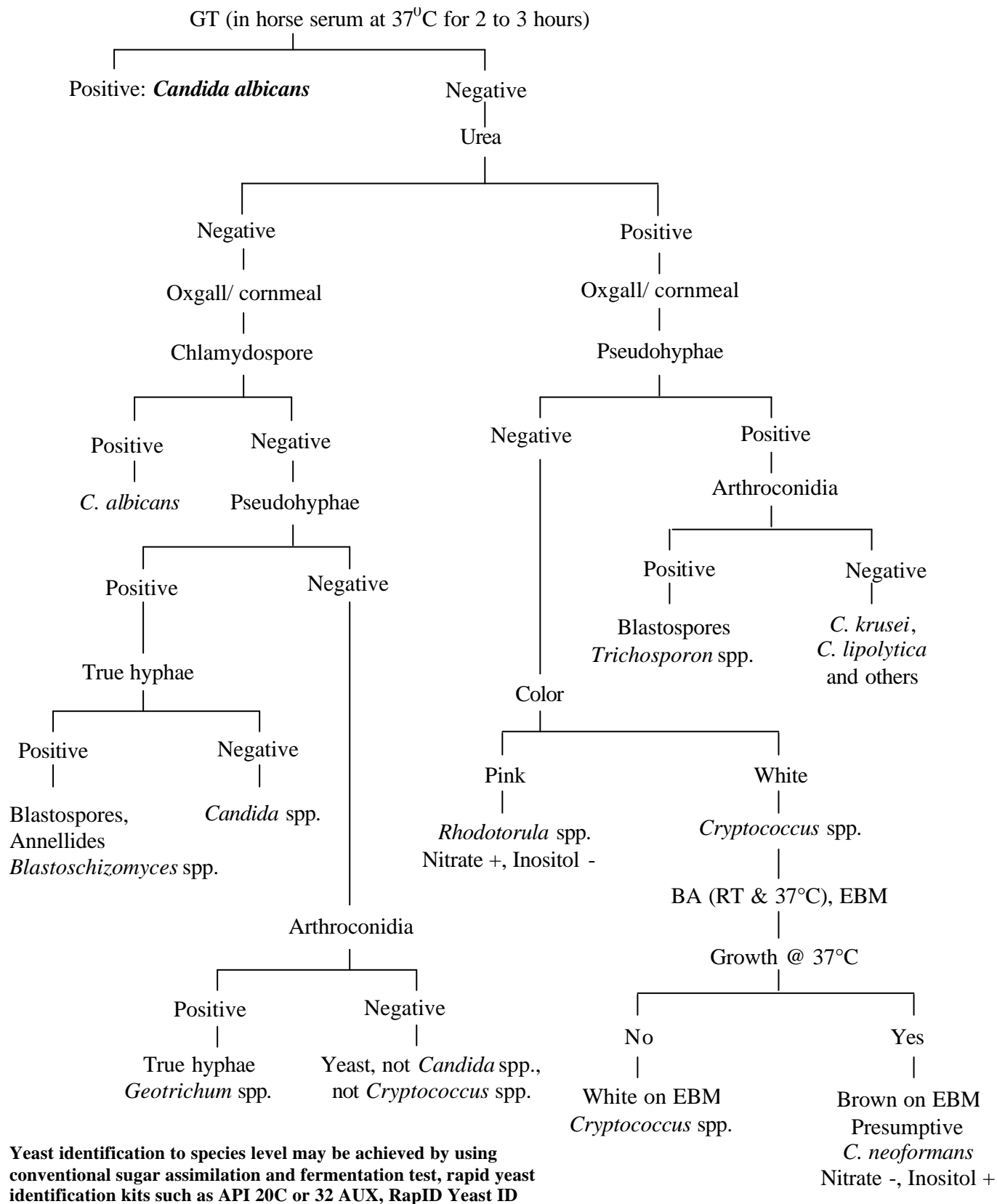


**Medical Mycology (Flow Chart)**  
 Subhash K. Mohan, MLT, ART, Senior Medical Mycology Technologist  
 UHN – Toronto Medical Laboratories and Mount Sinai Hospital

**Yeast Identification**



Yeast identification to species level may be achieved by using conventional sugar assimilation and fermentation test, rapid yeast identification kits such as API 20C or 32 AUX, RapID Yeast ID plus Vitek, Microscan or other available tests